

# Welcome to the BBLA Annual Meeting

We'll begin shortly.



# Today's Agenda



## 5:00 – 5:10 PM

- Opening Remarks & Approval of 2024 Annual Mtg Minutes  
*Mary Louise Embrey, Executive Director*

## 5:10 – 5:40 PM

- *Panel Discussion: “What You Can Do to Protect Our BB Environment”*
  - Guest Speakers: *Danielle Swallow (DE Sea Grant), Lisa Swanger (DE Center for Inland Bays), Drew Slater (Energize DE)*

## 5:40 – 6:10 PM

- President's Report (includes the Treasurer's Report prepared by Susan Fried)  
*Kathy Sierra*
  - *BBLA Budget Year Resolution Change (motion needed)*
- Board and Officer Nominations Approval (motion needed)  
*Diane Fogash & Kathy Shorter*
- Member Questions/Comments & Closing  
*Chris Lorence*

# BBLA 2024 Draft Annual Meeting Minutes

**DRAFT Minutes:  
BBLA Annual Meeting**

**June 26, 2024  
5:30 pm  
Virtual via Zoom Webinar**

**APPROVED BY BOARD OF DIRECTORS — 8-8-2024**

The BBLA Membership met on Wednesday, June, 26, 2024

In attendance were Board Members: Bob Baldini, Jennifer Carter, Mary Louise Embrey, Diane Fogash, Susan Fried, Jerry Hardiman, Lucille Kurtz, Claire Loftus, Chris Lorence, Pat McGuire, Kathy Shorter, Kathy Sierra, and Chip Smith

Lee Bunting was unable to attend

The meeting had 85 members registered to attend - 42 members attended

Meeting Opened by BBLA Executive Director Mary Louise Embrey; and Chris Lorence facilitated the webinar - there was an announcement that the meeting would be recorded

- Mary Louise Embrey welcomed the participants, explained the virtual process, and outlined the meeting agenda
- All Board Members were recognized
- Minutes from the June, 21, 2023 Annual Meeting were **APPROVED**
- Nominating Committee Report presented by Diane Fogash & Kathy Shorter
  - Board Members up for 2-year terms beginning today (Lee Bunting, Jennifer Carter, Chris Lorence, Kathy Shorter, Chip Smith)
  - Board Members serving the 2nd year of their 2-year terms were announced (Diane Fogash, Susan Fried, Jerry Hardiman, Lucille Kurtz, Claire Loftus, Pat McGuire, Kathy Sierra)
  - Nominated today to serve a new two-year term as Board of Director Officers are:
    - For President, Kathy Sierra

- For Vice President, Lucille Kurtz
- For Treasurer, Susan Fried

- **APPROVED**
- Interested members in serving on the Board should contact the Nominating Committee
- Guest Speaker - Town Manager Cliff Graviet presented on the current status re Flooding in Bethany Beach (recording available on BBLA website)
- Treasurer's Annual Report from 2023 was presented by Susan Fried - **APPROVED**
- Kathy Sierra presented the President's Annual Report via a PowerPoint presentation - reflecting on 55 years of service to BBLA Members
  - Thanked former BBLA President Ron Dobes & former BBLA VP Rich McHugh for their service and contributions
  - Communications and Advocacy Reports included in presentation
  - Donations Report included in presentation
  - Announced BBLA's 55th Anniversary Celebration in October 2024
- Videotape of Jack Burbage's reflections on being a long-time BBLA member
- Kathy Sierra provided Closing Remarks
  - Encouraged active participation of members to work with Board Members
  - Looking forward to celebrating with members in October

**The meeting was adjourned at 6:40 pm.**

# Guest Panel



*“What You Can Do to Protect Our BB Environment”*

- *Danielle Swallow (DE Sea Grant)*
- *Lisa Swanger (DE Center for the Inland Bays)*
- *Drew Slater (Energize DE)*



Community Resilience to  
Weather and Climate Hazards

Danielle Swallow  
Coastal Hazards Specialist  
Delaware Sea Grant  
June 24, 2025

# Top Natural Hazards in Delaware

- 2023 State Hazard Mitigation Plan



2023 Ranking	2023 Hazards
1	Coastal Flooding
2	Tropical Cyclones (hurricanes & tropical storms)
3	Inland Flooding (riverine, flood, flash)
4	Severe Winter Weather (blizzard, freezing fog, heavy snow, ice storm, sleet, winter storm)
5	Coastal Erosion
6	Severe Thunderstorms & Tornadoes (heavy rains, high winds, strong winds, thunderstorm winds, hail, lightning)
7	Extreme Temperatures (heat & cold)
8	Drought
9	Dam/Levee Failure Flooding
10	Wildfire & Smoldering Fires
11	Local earth movement (sinkholes & landslides)
12	Earthquakes

# How Will Global Warming Influence Precipitation in Delaware?



More rainfall over shorter periods of time

# Temperatures?



Average temperatures will increase.



## Sea Level Rise

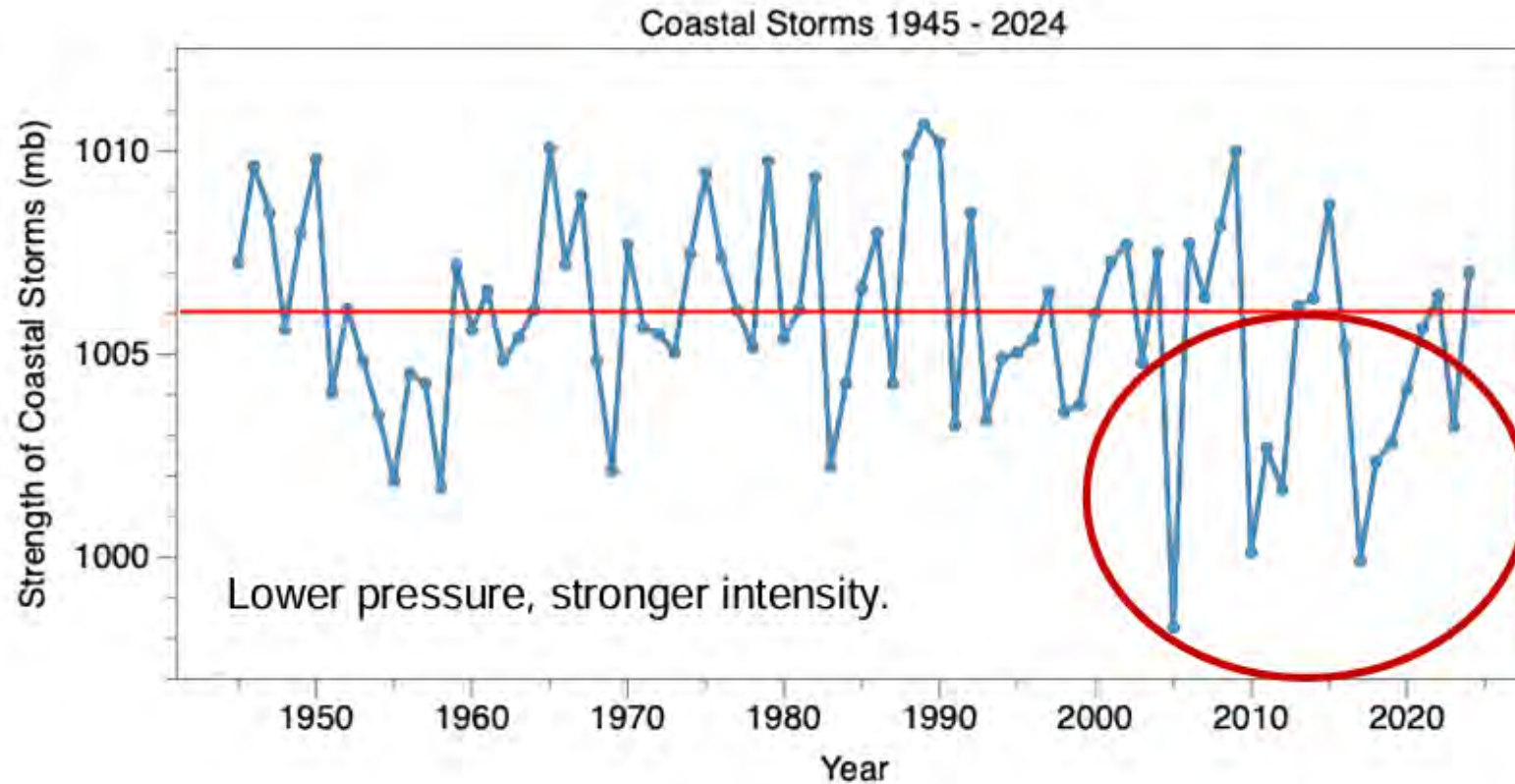
- Up to 1 ½ feet of sea level rise by 2050
- More damaging floods and erosion
- More frequent high tide flooding (“sunny day flooding”)

*Bethany Beach at 1.5 ft SLR.*

Source: NOAA Sea Level Rise Viewer <https://coast.noaa.gov/slr/>

Delaware is seeing more extreme weather:

## Coastal Storm Intensity 1945 - 2024

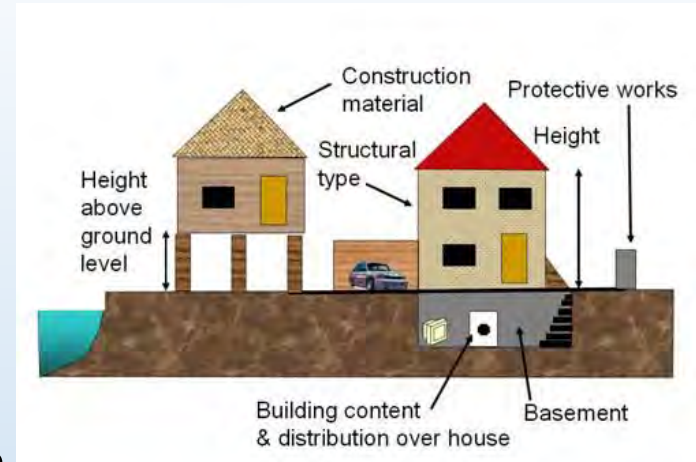


**Since 2000 there has been a tendency toward more frequent and stronger coastal storms.**

38

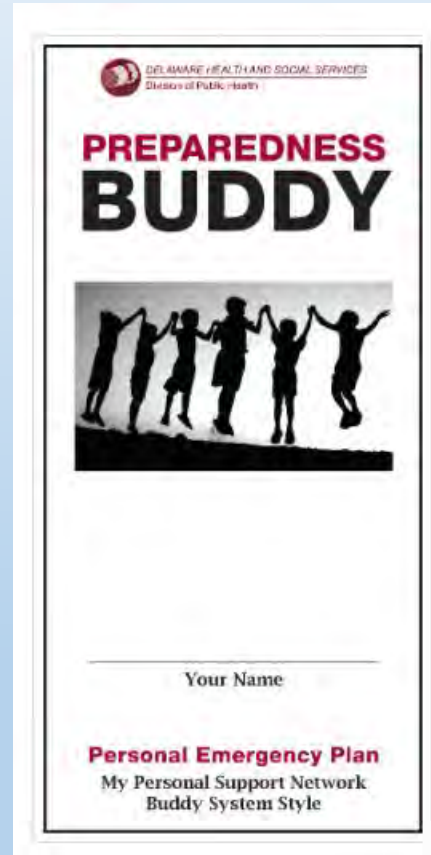
# Know Your Risks:

- What is the elevation of your property?
- Are you close to a waterway or wetland?
- Are you in an evacuation zone? <https://prepared.org/know-your-zone/>
- Are local swales, drains, and gutters well-maintained?
- Do other properties drain towards you or away from you?
- Is your home storm-ready?
- Are you capable of evacuating on your own?
- If you shelter in place, can you meet your needs for 3 days, even if there is no power or water?
- Are you dependent on others for critical life-sustaining treatment, or transportation, or personal care?
- Do you have pets or dependents to consider?



# Make a Plan.

<https://preparede.org/make-a-plan/>



# Invest in Nature.

**The natural floodplain is:**



- Best at receiving, conveying, and discharging excess water.
- A form of “green” community-based infrastructure that Nature gives us for **free**.
- Produces multiple benefits vs. grey infrastructure.
- Costs us \$\$\$ to replace it or mimic it with engineered solutions.



Thank you!  
Danielle Swallow  
*[dswallow@udel.edu](mailto:dswallow@udel.edu)*

GROWING RESILIENCE

FROM THE  
BAYS UP



DELAWARE  
CENTER FOR THE  
INLAND BAYS

preserve • protect • restore

Lisa Swanger  
Director of Outreach & Education

# ABOUT US

- Non-profit established in 1994 by State of Delaware General Assembly
- 1 of 28 National Estuary Programs
- Promote the wise use & enhancement of the Inland Bays watershed



*Delaware  
Inland Bays  
Watershed*



This is HOME  
*Inland Bays Watershed*



Photo: Driscoll Drones

# Land—Water Connections



# SHIFTING BAY HEALTH





# HOMEOWNER ACTION

[inlandbays.org/homeowners/](http://inlandbays.org/homeowners/)

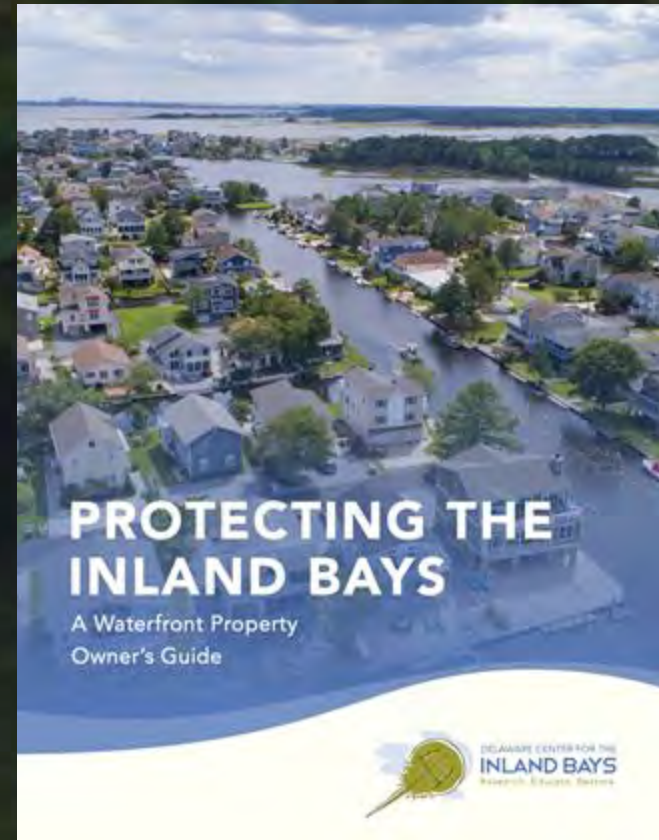




Photo: Caitlin  
Chahey



*Everyday solutions. Practical approach. Professional guidance.*

# BAYS TO BACKYARDS

COMMUNITY ENGAGEMENT PROGRAM



Community Action  
Stormwater &  
Flooding  
Nature-Friendly  
Landscaping  
Wildlife Habitat  
Waste Reduction  
Climate & Energy  
and more!



**DELAWARE**  
**CENTER FOR THE**  
**INLAND BAYS**  
preserve • protect • restore



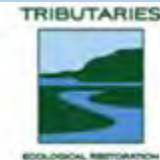
UNIVERSITY OF DELAWARE  
**COOPERATIVE**  
**EXTENSION**



DELAWARE DEPARTMENT OF  
NATURAL RESOURCES AND  
ENVIRONMENTAL CONTROL



**Sea**  
**Grant**  
DELAWARE



Thanks to BBLA's  
Civic Donation  
Program for  
supporting Bays to  
Backyards!



**DELAWARE  
CENTER FOR THE  
INLAND BAYS**  
preserve • protect • restore



INLANDBAYS



@DEINLANDBAYS



/DEINLANDBAYS



DELAWARE CENTER FOR THE INLAND BAYS

**Lisa Swanger**

Outreach & Education Director  
lswanger@inlandbays.org



**ENERGIZE**  
**DELAWARE**<sup>®</sup>  
SUSTAINABLE ENERGY UTILITY

# Energize Delaware

---

Inspiring Sustainable Energy Solutions  
for a Thriving Environment and Economy

**The cheapest, cleanest  
energy is the energy we  
don't consume.**

# Home Energy Checkup and Counseling

- One Hour in-home visit – average \$240 of direct install measures
- Available Statewide – regardless of income level
- No cost to participants



**\$190**

**Potential Annual Savings  
from Direct Install  
Measures**



**30**

**Potential Therm  
Savings from  
Direct Install Measures**

Which equates to:

- Charging 12,000 smartphones
- 404 miles in a gas car
- Planting 2 trees

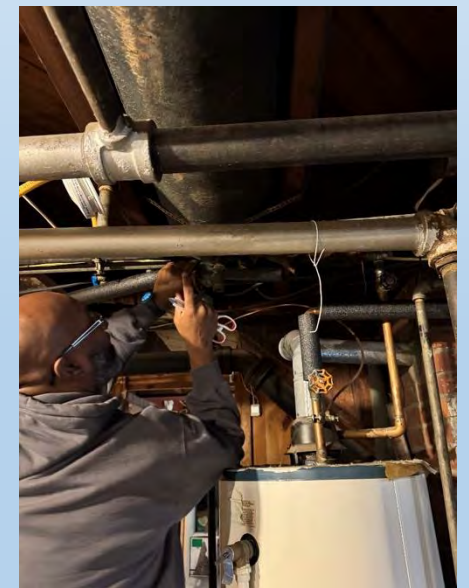


**900**

**Potential kWh Savings  
from Direct Install  
Measures**

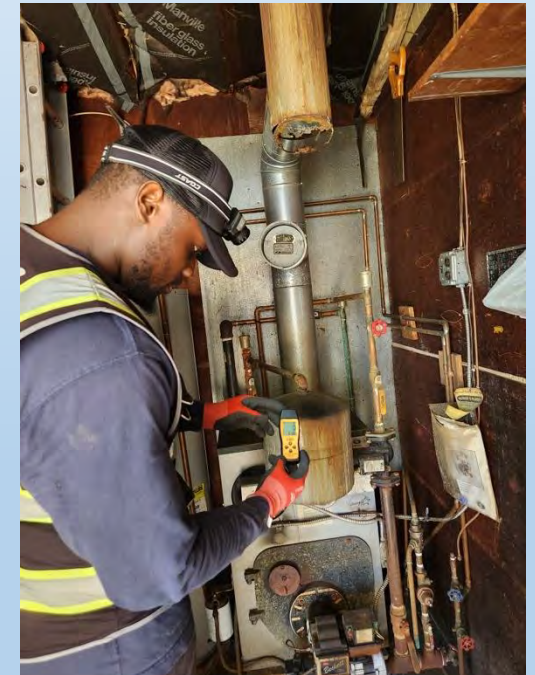
Which equates to:

- 187 dishwasher cycles
- Planting 9 trees
- 7,200 Keurig cups
- 148 laundry cycles
- Charging 48,000 smartphones
- More than a home's monthly energy usage



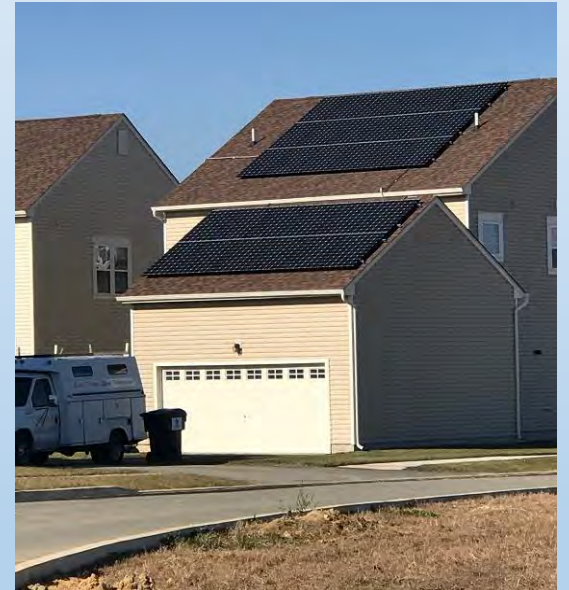
# Home Performance with Energy Star®

- Audits and Incentives for Residential Energy Efficiency
- Greater than \$75 million in lifetime energy savings
- More than \$50 million invested
- 18 months:
  - 11,500 jobs
  - \$10 million in incentives
- LTO: 25% bonus through 9/30



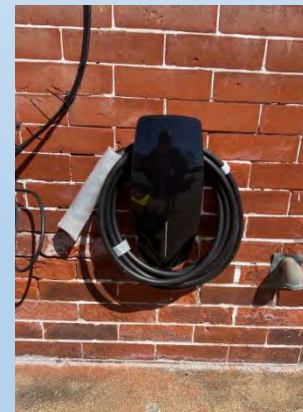
# Residential Solar and Energy Efficiency Loans

- Residential Solar Loans 3.99%; 70% of project cost, up to \$50,000; 10-year term
- Residential Efficiency Loans 5.99%, 100% of project cost, up to \$50,000; 10-year term
- \$19 million+ in loans since 2017
- Residential Solar more than \$15.5 million in lifetime energy savings



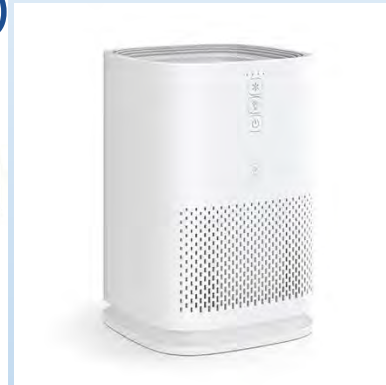
# Residential Electric Vehicle Charging Rebate

- Rebates for up to 50% of Electric Vehicle Charger cost  
Up to 90% for income eligible Delawareans
- Rebates for up to 50% of cost to install Electric Vehicle Charger  
Up to 90% for income eligible Delawareans
- Requires an Energize Delaware Home Energy Audit  
\$50 for the energy audit or \$25 for income eligible Delawareans
- EV Chargers are available on the Energize Delaware Online Marketplace



# Residential Online Marketplace

- Smart Thermostats – some as low as \$0 through 6/24/25
- Air Purifiers
- EV Chargers
- LED Lighting
- Advanced Powerstrips
- Water Saving Measures



Ultimate control of  
your home's  
temperature.



# Contact Information

**Drew Slater**

**Executive Director**

[Drew.Slater@deseu.org](mailto:Drew.Slater@deseu.org)

**Suzanne Sebastian**

**Deputy Director**

[Suzanne.Sebastian@deseu.org](mailto:Suzanne.Sebastian@deseu.org)

[www.energizedelaware.org](http://www.energizedelaware.org)

**302-883-3048**

# Today's Agenda



## 5:00 – 5:10 PM

- Opening Remarks & Approval of 2024 Annual Mtg Minutes  
*Mary Louise Embrey, Executive Director*

## 5:10 – 5:40 PM

- *Panel Discussion: “What You Can Do to Protect Our BB Environment”*
  - Guest Speakers: *Danielle Swallow (DE Sea Grant), Lisa Swanger (DE Center for Inland Bays), Suzanne Sebastian (Energize DE), Drew Slater (Energize DE)*

## 5:40 – 6:10 PM

- President's Report (includes the Treasurer's Report prepared by Susan Fried)  
*Kathy Sierra*
  - *BBLA Budget Year Resolution Change (motion needed)*
- Board and Officer Nominations Approval (motion needed)  
*Diane Fogash & Kathy Shorter*
- Member Questions/Comments & Closing  
*Chris Lorence*



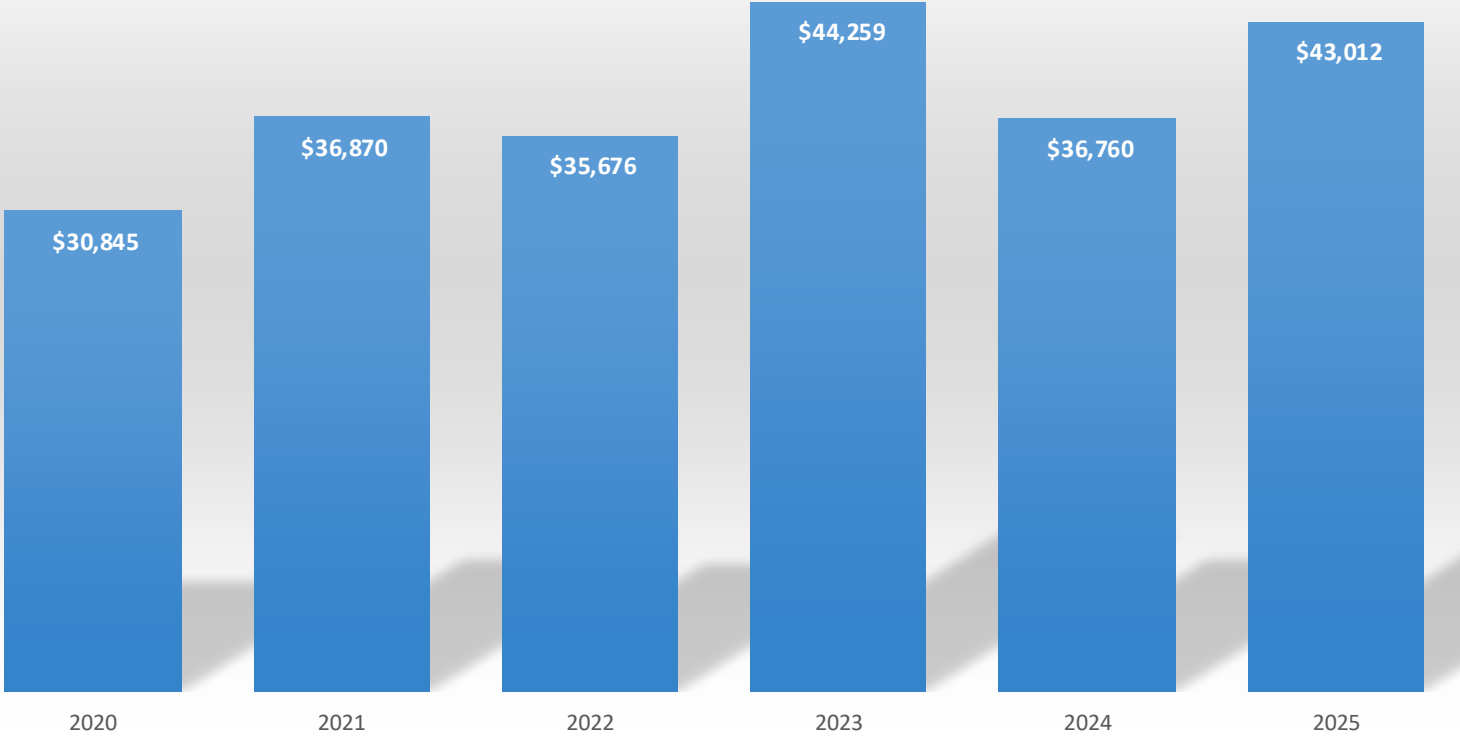
# Treasurer's Report

## 2024 Financial Outcome

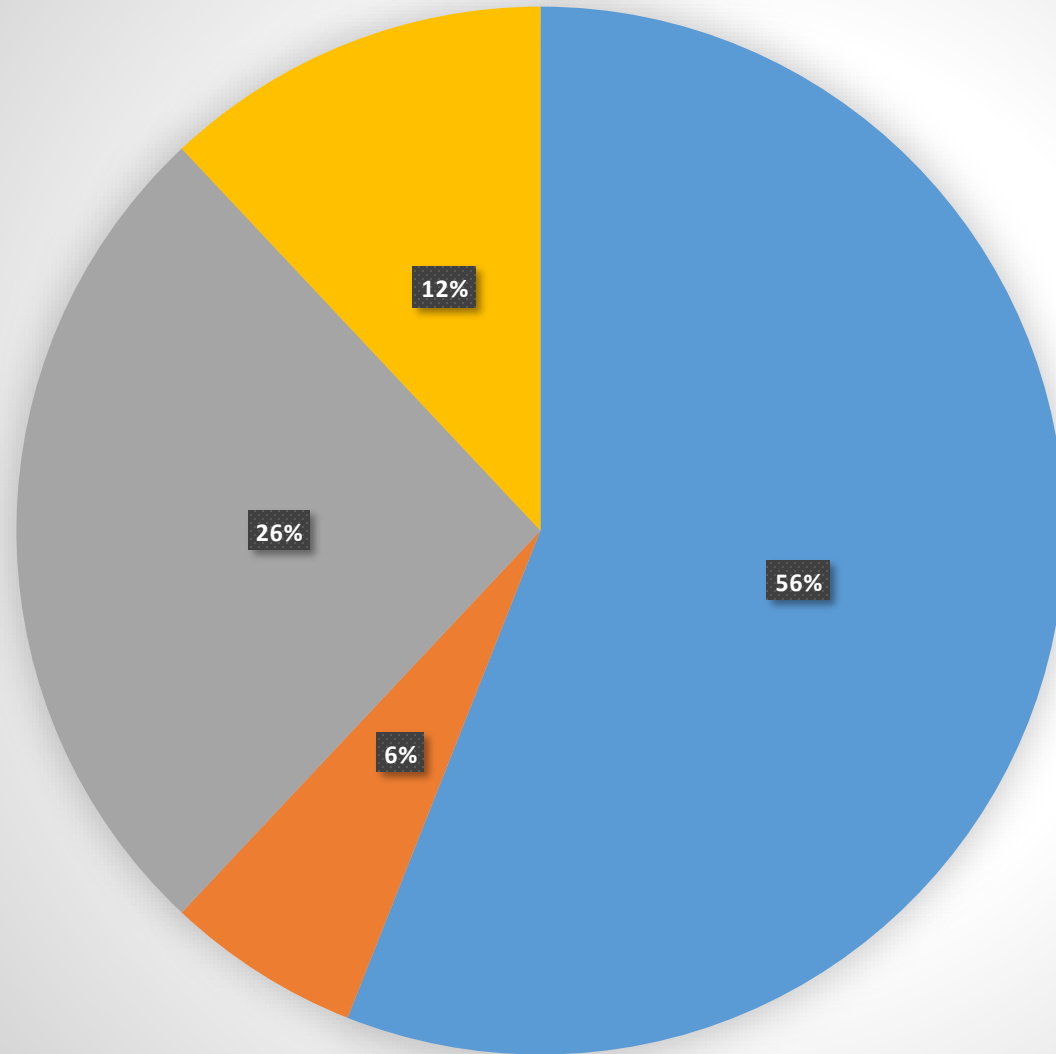


- We closed the year in balance (income covered all expenses)
- We maintained reserves at one year of expenses
- We are requesting to change our budget year from Annual to Fiscal to accommodate our membership renewal efforts (Jan-April)

# BBLA Dues Collected

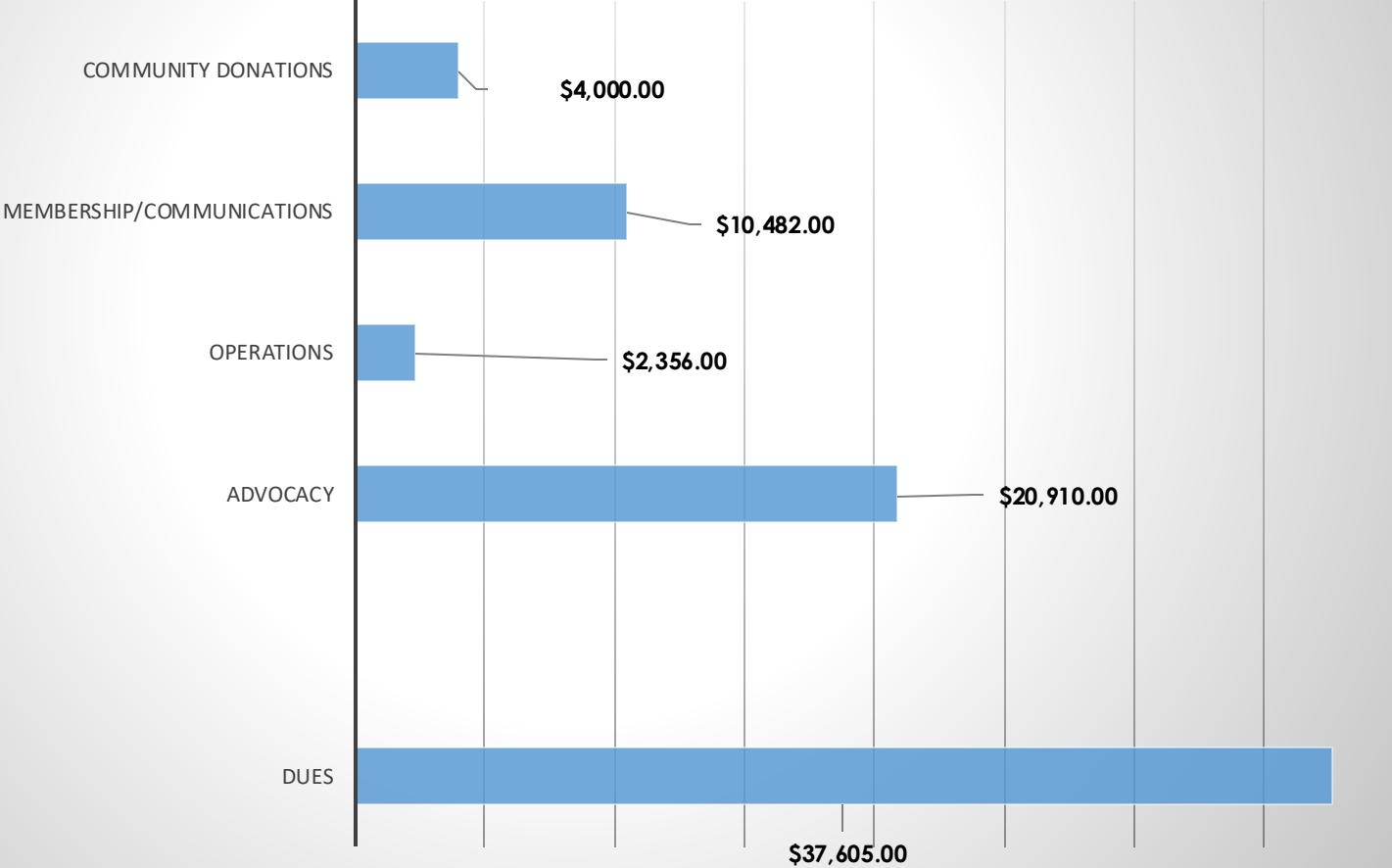


# BBLA Expense Allocation

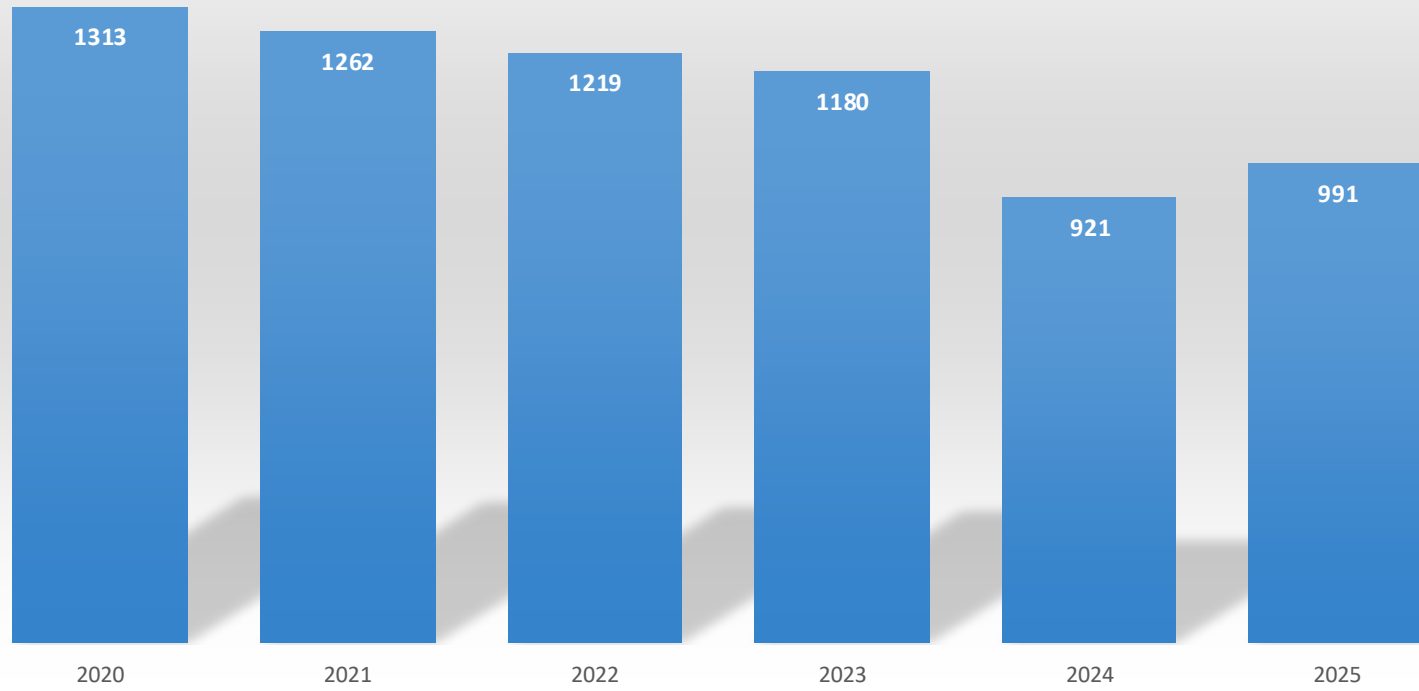


- Advocacy
- Operations
- Membership Communications
- Community Donations

# 2024 BBLA Income & Expense



## BBLA Membership





## 2025 Goal:

Communicate--Advocate--Donate

with Special Focus on Advocacy &  
Expanding Ways to Provide Benefits  
to Our Members

- Reached the milestone of 55 continuous years of service to BBLA Members in 2024
- Time to “turn the page” and continue moving forward
- Want to get to know new property owners & best ways to meet their needs and expectations

# Snapshot of Today's BBLA



- ✓ Communications & Advocacy Efforts Coordinated by BBLA Exec. Dir.
- ✓ Strong Partnerships with key players at local, state & federal levels
- ✓ Successful New Membership Strategy emerging –  
gained over 90 NEW members in 2025
- ✓ Received BBLA's first-ever Grant  
AARP Community Challenge Microgrant -  
working on building resilience in the 19930 for disaster preparedness

# Snapshot continued ...



- ✓ Gaining Sign-on for Proposed Expansion of the Sussex County Council
- ✓ Walkability Study in BB underway with AARP/America Walks
- ✓ Monitoring the Pulse of Membership through Quick Poll Questions  
in each *Beach News*
- ✓ Electronic Communications opening at 79% rate

# Who's Working for You??

- Talented Board of Directors – experienced professionals
  - with ideas – energy – commitment
- Members interested in serving as a volunteer board member or helping out with committee work – **contact us**





## Board Members Serve on Town Committees:

- 2 on Planning & Zoning (Diane Fogash & Kathy Shorter)
- 2 on Bicycle & Pedestrian Safety (Diane Fogash & Art Diver)
- 2 on 4<sup>th</sup> of July Parade (Chris Lorence is Chair & Jenn Carter)
- Diane Fogash on Police Accountability
- Kathy Shorter on Non-Residential Design
- Chip Smith on the Stormwater & Flooding
- Lee Bunting on Cultural & Historic Affairs and Charter & Ordinance Review

**Thank  
YOU!**

For Sharing Your  
Time & Talents!!

# Areas of Emphasis for 2025-2026

- Stay involved with environmental & flooding issues
- Work with the Town Council, partner orgs on growth issues & ordinance improvements
- Continue growing the number of business affiliates
- Keep members informed of BB issues & happenings
- Continue to meet periodically with Town Officials



# 2024 Donations – Charitable & Civic

In 2024 -- \$4,000  
Contributed to Charitable  
& Civic Organizations



## **CIVIC:**

### **FRIENDS OF THE SOUTH COASTAL LIBRARY**

\$1,000 Donation was for Beach & Bay Cottage Tour – major source of fundraising to support the library & its many programs

### **DE CENTER FOR THE INLAND BAYS**

\$1,000 Donation was to support purchase of functional T-shirts for the fish survey program as part of the Participatory Science Program

### **SUSSEX PRESERVATION COALITION**

\$1,000 Donation was to support the Coalition's education, advocacy, & policy efforts to promote resiliency, sustainability, and climate adaptation in Sussex County; and to preserve natural habitats for the wellbeing of all Sussex communities

## **CHARITABLE:**

### **DELAWARE BREAST CANCER COALITION**

\$1,000 Donation was for local mentors who follow breast cancer patients on their journey from diagnosis through treatment and beyond

# How Are We Linked Together?

- We are all members of an association for BB property owners
- We work together for a common goal: enjoy the beach community we bought into, whether in 1969 (or before) or in the 21st century
- Maintaining excellence takes work. Are you in?



# What we need from you....



- Stay informed and make your views known
  - Respond to quick polls & attend BBLA events.
- Tell your neighbors about BBLA
  - Help us continue to grow our membership numbers.
- Your financial support for our work
  - 26% of members upgraded their memberships to higher levels, which contributed to over 42% of our operating budget – this generosity greatly benefits BBLA's work!



# Resolution: Adopt Fiscal Year Budget Cycle

**To be adopted on:** June 24, 2025

**Effective Date:** July 1, 2025

- **WHEREAS**, the Bethany Beach Landowners Association (BBLA) currently operates on an annual budget cycle from January 1 to December 31; and
- **WHEREAS**, the Board of Directors seeks to align BBLA's financial planning and reporting processes with a fiscal year structure that better supports organizational operations and membership engagement;
- **NOW, THEREFORE, BE IT RESOLVED**, that effective **July 1, 2025**, BBLA shall adopt a **fiscal year budget cycle** beginning **July 1** and ending **June 30** of the following calendar year; and
- **BE IT FURTHER RESOLVED**, that the Treasurer shall adjust all financial planning, reporting, and budget development activities to align with the new fiscal year structure beginning with the 2025–2026 fiscal year.

# Board and Officer Nominations Approval

- *Election of board members*
- *Election of Officers*



The background features a repeating pattern of speech bubbles in various colors (red, yellow, purple, grey) against a dark teal background. Each speech bubble contains a white question mark. The text "Member Questions & Feedback" is centered in white, bold font.

# Member Questions & Feedback

Thank you for attending the  
BBLA Annual Meeting

